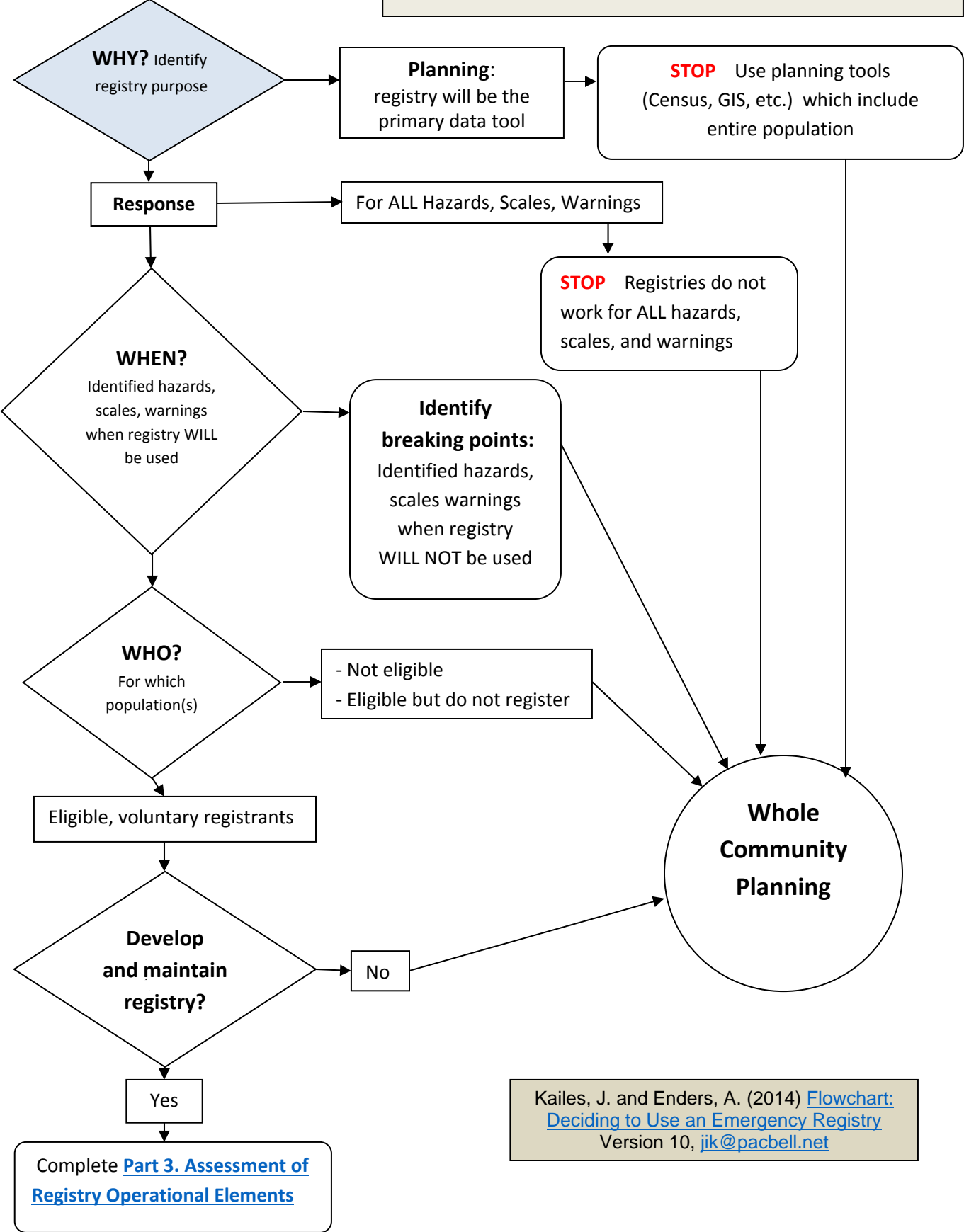


Flowchart:
Deciding to Use an Emergency Registry
 Draft, V10 © details of the steps in the process are at:
<http://www.jik.com/d-rgt.html>

Registry Assessment - Parts 1 & 2



Kailes, J. and Enders, A. (2014) [Flowchart: Deciding to Use an Emergency Registry](#) Version 10, jik@pacbell.net